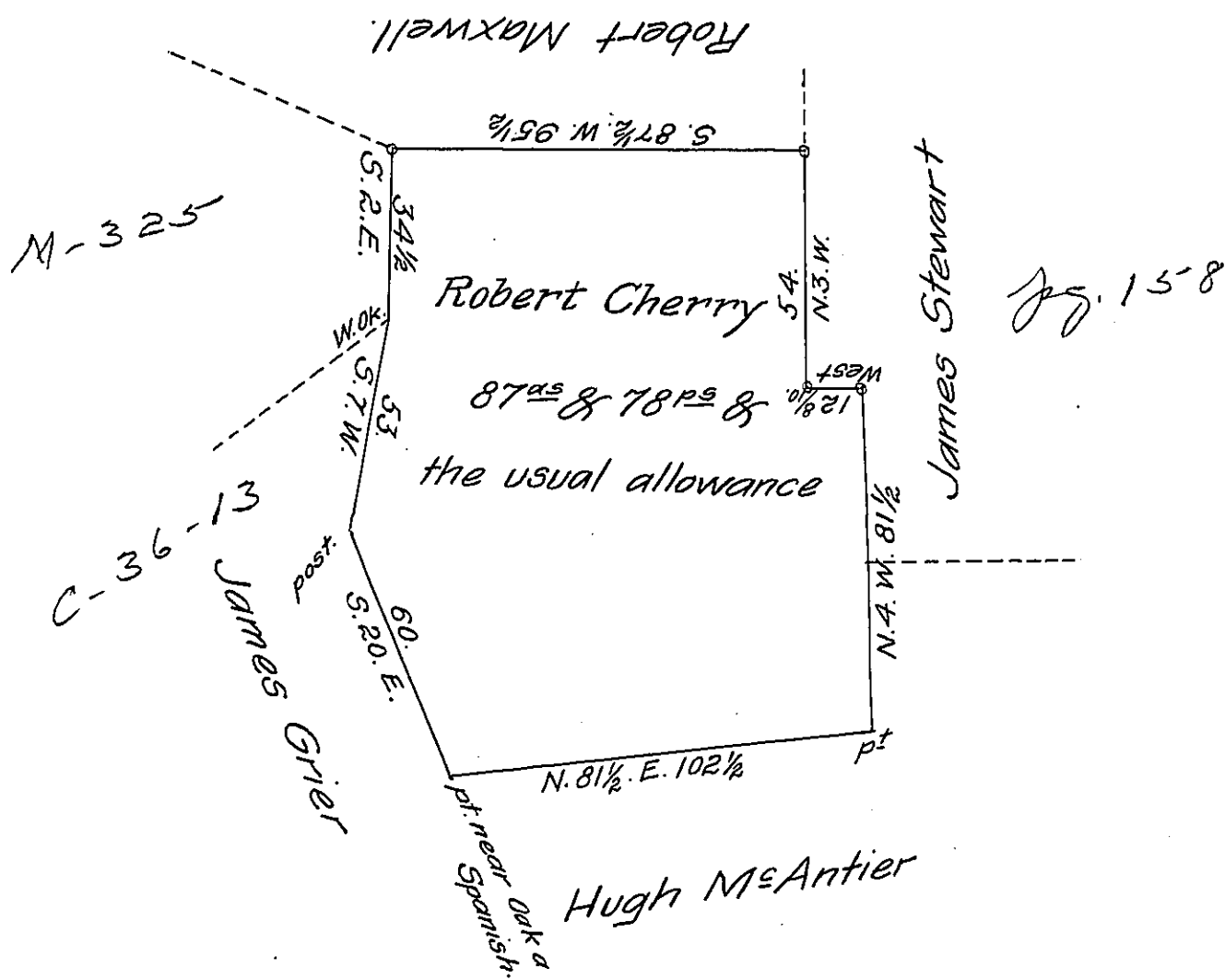


A-39-271



A Draught of a Tract of Land Situate in Drumore Town-
 ship in the County of Lancaster Containing Eighty Seven acres
 and Seventy Eight perches and the usual Allowance of Six $\frac{1}{2}$
 Cent for Roads &c. Surveyed the 14th day of August A.D. 1809
 In pursuance of a Warrant bearing date the 12th day of Novem-
 ber Anno Domini 1742 Granted unto Robert Cherry, &c.

p^s Jacob Hibshman D.S.

To Andrew Porter Esq^r }
 Surveyor General. }

IN TESTIMONY that the above is a copy of the original remaining on file in
 the Department of Internal Affairs of Pennsylvania, made
 conformably to an Act of Assembly approved the 16th day of
 February, 1833, I have hereunto set my Hand and caused
 the Seal of said Department to be affixed at Harrisburg,
 this fourteenth day of January 1907.

Jacob Hibshman
 Secretary of Internal Affairs.